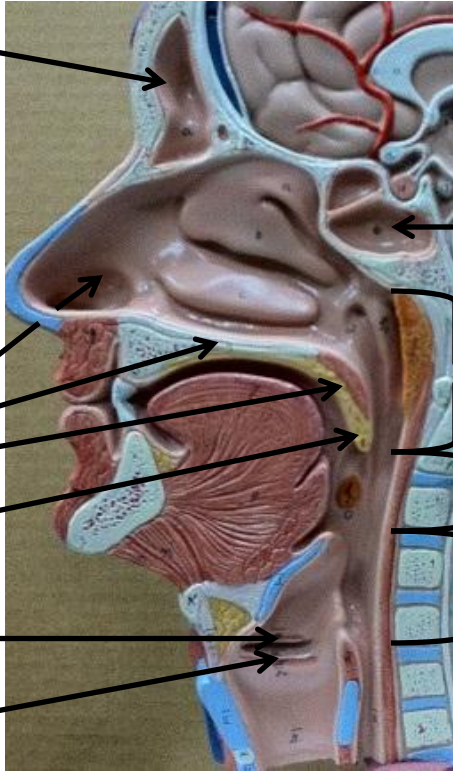


Half Head Model Key

For the audio version of the file, click this link: [ID - Half-Head Respiratory Model Audio](#)

Frontal Sinus



Sphenoid Sinus

Nasopharynx

Oropharynx

Laryngopharynx

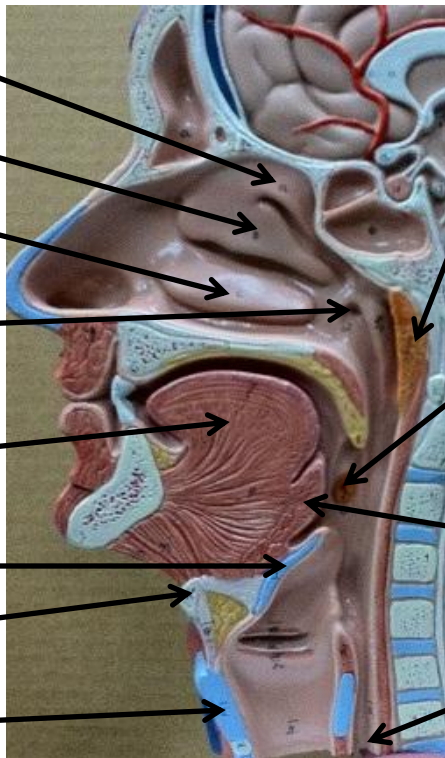
Soft Palate

Uvula

Vestibular Fold (a.k.a. False Vocal Cords)

Vocal Fold (a.k.a. True Vocal Cords)

Superior Nasal Concha
Middle Nasal Concha
Inferior Nasal Concha



Pharyngeal Tonsil

Palatine Tonsil

Oral Tonsil

Esophagus

Opening of Pharyngotympanic tube

Tongue

Epiglottis

Hyoid Bone

Thyroid Cartilage