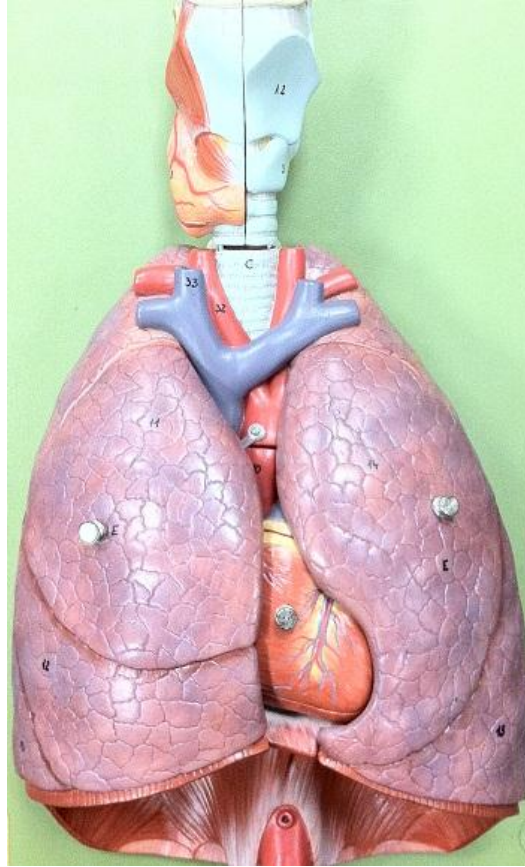


Lungs and Tracheal Cartilage Model KEY



1. Hyoid Bone
2. Thyroid Cartilage
3. Cricoid Cartilage
4. Epiglottis
5. Corniculate Cartilage
6. Right Primary Bronchus (a.k.a. Right Main Bronchus)
7. Left Primary Bronchus (a.k.a. Left Main Bronchus)
11. Right Superior Lobe
12. Right Middle Lobe
13. Right Inferior Lobe
14. Left Superior Lobe
15. Left Inferior Lobe
- G. Diaphragm