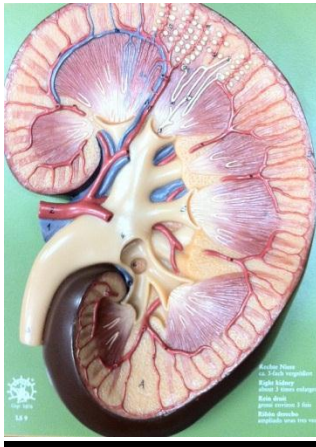


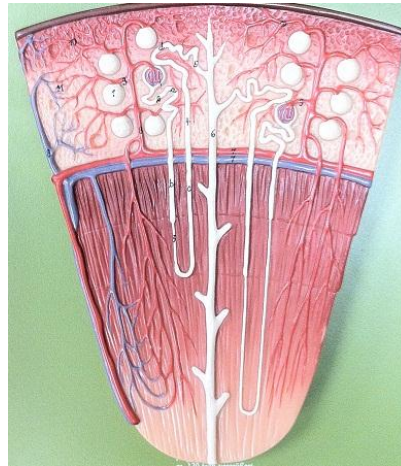
## Three Part Kidney Model KEY

Whole



1. Renal Vein
2. Renal Artery
3. Ureter
4. Renal Pelvis
5. Minor Calyx
7. Renal Pyramids
8. Collecting Duct
10. Loop of Henle
12. Renal Corpuscles
13. Interlobar Artery
14. Cortical Radiate Artery
16. Arcuate Artery
17. Interlobar Vein
18. Arcuate Vein
- B. Renal Capsule

Renal Pyramid



1. Bowman's Capsule (a.k.a. Glomerular Capsule)
2. a. Proximal Convoluted Tubule  
b. Descending limb of Loop of Henle  
c. Ascending Limb of Loop of Henle  
d. Distal Convoluted Tubule
6. Collecting Duct
7. Arcuate Artery and Vein
8. Cortical Radiate Artery and Vein
9. Afferent Arteriole
10. Efferent Arteriole

Renal Corpuscle



1. Glomerulus
2. Bowman's Capsule (a.k.a. Glomerular Capsule)
3. Proximal Convoluted Tubule
6. Afferent Arteriole
7. Efferent Arteriole

**NOTE:** Number and corresponding part are not the same for all portions of this model  
(ex: Arcuate artery is labeled 16 on Whole kidney, but labeled 7 on the Renal Pyramid)  
Developed by the Learning Commons at Tallahassee Community College